



# **THE HOSPITAL FIGURES**

## 2020



**Bambino Gesù**  
OSPEDALE PEDIATRICO



**THE HOSPITAL IN PILLS 4**

**FOCUS ON COVID 6**

**HEALTHCARE 8**

**RESEARCH 12**

**ACCOMMODATION 14**

**PROFESSIONALS 16**

**INITIATIVES  
OF SOLIDARITY 17**

# THE HOSPITAL IN PILLS

## 1869

**Bambino Gesù Children's Hospital was founded, in via delle Zoccolette**, at the generous initiative of the Dukes Scipione and Arabella Salviati

## 1887

**The Hospital was moved to the Gianicolo hill**, to occupy a part of Sant'Onofrio Convent

## 1917

**Queen Elena of Savoy entrusted the Duchess Maria Salviati** with the management of the community of Santa Marinella, which was turned into an important hospital centre

## 1924

In reason of the increase in the Hospital size and in the services provided, and in order to ensure a stable future to the facility, the **Salviati family donated the Hospital, including Santa Marinella premises, to Pope Pius XI**

## 1929

Under the **Lateran Pacts**, the Gianicolo premises became part of the estates enjoying the immunities provided for in art. 15 of the Lateran Treaty

## 1978

Pope Paul VI entrusted Bambino Gesù Children's Hospital with a large area located in Palidoro, on the sea front, with three wards managed by the Pontifical Commission of Assistance. Thus, the **Palidoro facility was born** - a centre that in a few years' time would become a state-of-the-art facility for medical and surgical treatments

## 1985

Bambino Gesù Children's Hospital was recognized by the Ministry of Health as a **Scientific Institute for Research, Hospitalization and Healthcare** (IRCCS) in the paediatrics field

## 2012

The development of the Hospital was boosted through the creation of a large facility in the extra-territorial area close to the **Basilica of San Paolo Fuori le Mura**, where outpatient services and scientific research laboratories are now located

## 2015

Bambino Gesù Children's Hospital was recognized as an "**Academic Medical Center**" for its extensive medical and clinical training activity by **Joint Commission International**, the leading international accreditation body for the healthcare sector

## 2019

The Hospital celebrates its **150<sup>th</sup> anniversary** and pursues its development with the refurbished premises of Viale Baldelli: four thousand square meters completely dedicated to prenatal diagnosis, foetal and perinatal cardiology, as well as to the care of children and teenagers suffering from neuropsychiatric and rare diseases

## 2020

Worldwide outbreak of the **SARS-CoV-2 pandemic**. The Hospital becomes the paediatric reference centre for the management of the emergency. The Covid Centre is set up at Palidoro premises for the safe hospitalization of coronavirus-positive patients

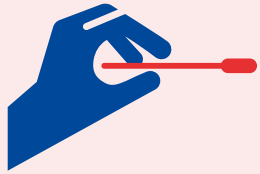


With its **607 BEDS** (40 of which in the intensive care unit and 22 in the neonatal sub-intensive care unit), **4 PREMISES** (Gianicolo and San Paolo Fuori le Mura in Rome; Palidoro and Santa Marinella on the coast of Lazio) and its activity covering **ALL PAEDIATRIC SPECIALTIES**, today the hospital is **THE LARGEST UNIVERSITY HOSPITAL AND PAEDIATRIC RESEARCH CENTRE IN EUROPE**, acting as a point of reference for the health of children and teenagers coming from all over Italy and from abroad.

The Hospital is home to the Italian team of **ORPHANET**, the world's largest database for rare diseases.



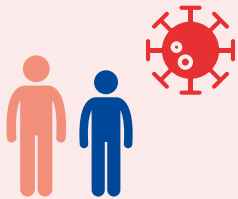
# FOCUS ON COVID



**61,292**

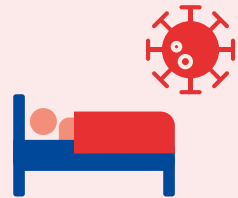
**SWABS ON PATIENTS (AND PARENTS)**

With a positivity rate of **5%**



**2,034**

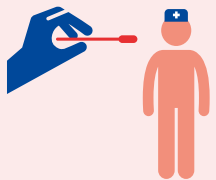
**CHILDREN AND TEENAGERS (OR PARENTS)  
TESTED POSITIVE FOR SARS-COV-2**



**455**

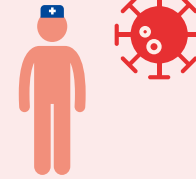
**PATIENTS AFFECTED BY COVID-19 ADMITTED**

**16** of whom to the intensive care unit



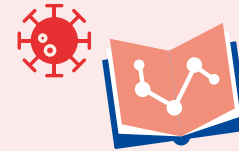
**28,247**

**SWABS ON THE STAFF**



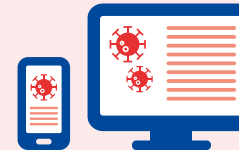
**147**

**HOSPITAL WORKERS TESTED POSITIVE  
FOR SARS-COV-2**



**103**

**DEDICATED SCIENTIFIC PUBLICATIONS**



**More than 100**

**DIGITAL INFORMATION CONTENTS  
ON THE PANDEMIC**

With **5 million** views

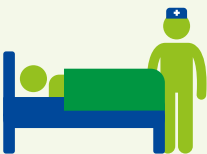
# HEALTHCARE



**62,010**

**PATIENTS ACCESSING THE EMERGENCY DEPARTMENT**

- **66%** at Gianicolo premises, **34%** at Palidoro premises
- **305** neonatal emergency transportations
- **90** transportations through the Vatican's heliport
- **2,697** admissions to the intensive care units



**26,179**

**ORDINARY ADMISSIONS**

- **7** days as average length of stay (**+1,14%** compared to the average clinical complexity)
- **30%** of patients come from outside the region; mainly from Campania, Puglia, and Calabria
- **15%** of patients are foreign nationals (Romania, Albania, and Bangladesh)



**522**

**REHABILITATION ADMISSIONS**

**32** days as average length of stay



**2,988**

**OUTPATIENT SURGERIES**



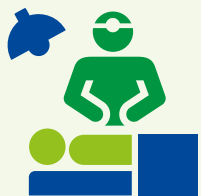
**30,196**

**SURGICAL AND INTERVENTIONAL PROCEDURES**



**1,978,910**

**OUTPATIENT SERVICES**



**383**

**ORGAN, CELL, AND TISSUE  
TRANSPLANTATIONS**

The Hospital is one of the few European centres authorized to perform all types of paediatric transplantations



**21**

**KIDNEY**

7 of which from living donor



**32**

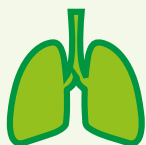
**LIVER**

4 of which from living donor



**7**

**HEART**



**2**

**LUNG**



**19**

**CORNEAL**



**80**

**HOMOGRAFT**



**47**

**AUTOLOGOUS  
BONE MARROW**

**162**

**ALLOGENEIC  
BONE MARROW**



**13**

**AMNIOTIC  
MEMBRANE**



**13**

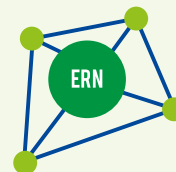
**ARTIFICIAL  
HEARTS**

as a bridge to heart transplant



**15,223**

**PATIENTS ENROLLED  
IN THE RARE DISEASES NETWORK**




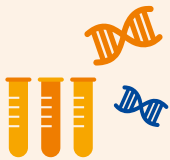







**15**

**ERNS PARTNERED BY THE HOSPITAL**


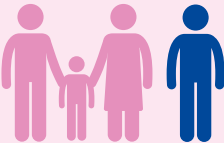
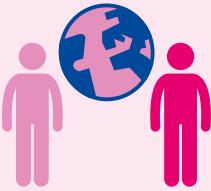

Bambino Gesù is the first European paediatric hospital by number of partnerships with European networks dedicated to rare diseases



# RESEARCH

	<b>1,066</b> <b>PERSONS INVOLVED IN SCIENTIFIC RESEARCH</b> <b>555</b> of whom are research fellows
	<b>719</b> <b>RESEARCH PROJECTS AND CLINICAL TRIALS</b> Namely: <ul style="list-style-type: none"> <li>• <b>307</b> infrastructural and biomedical research projects</li> <li>• <b>412</b> clinical trials (<b>283</b> of which academic, and <b>129</b> sponsored)</li> <li>• <b>52%</b> dedicated to rare cancers and diseases</li> </ul>
	<b>4,602</b> <b>PATIENTS ENROLLED IN CLINICAL TRIALS</b>
	<b>13</b> <b>NEW DISEASE-CAUSING GENES IDENTIFIED</b>
	<b>32,000</b> <b>GENETIC TESTS</b>

	<b>937</b> <b>SCIENTIFIC PUBLICATIONS</b> <b>4.015</b> <b>ROUGH IMPACT FACTOR</b> <ul style="list-style-type: none"> <li>• <b>+6%</b> compared to 2019</li> <li>• Within the IRCCSs network, including those dedicated to adult patients, the Hospital ranks 3rd by normalized Impact Factor, 4th by number of publications, and 8th by Citation Index</li> </ul>
	<b>5</b> <b>NEW PATENT APPLICATIONS</b>
	<b>2,282</b> <b>BODIES INVOLVED IN SCIENTIFIC COLLABORATIONS</b> <ul style="list-style-type: none"> <li>• <b>1,879 (82%)</b> located in other countries, <b>403</b> in Italy</li> <li>• <b>49%</b> hospitals, <b>32%</b> universities</li> </ul>
	<b>51</b> <b>EDITIONS OF CME EVENTS</b> <ul style="list-style-type: none"> <li>• <b>500</b> participants in CME courses</li> <li>• <b>4,621</b> hours of CME training delivered</li> <li>• <b>500</b> participants in classroom training in compliance with COVID-19 preventive measures</li> <li>• <b>39,053</b> participants in distance learning courses with CME credits</li> </ul>

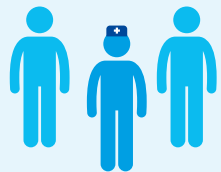
# ACCOMMODATION

	<p><b>3,801</b> <b>FAMILIES ACCOMMODATED</b> 111,833 free nights/person</p>
	<p><b>1,641</b> <b>PATIENTS SUPPORTED BY THE SOCIAL SERVICES</b> 42% of foreign origins</p>
	<p><b>7,795</b> <b>CULTURAL MEDIATIONS</b></p> <ul style="list-style-type: none"> <li>• 6,925 face to face, 870 by telephone</li> <li>• More than 70 different languages spoken</li> </ul>
	<p><b>2,763</b> <b>STUDENTS AT THE "SCHOOL IN HOSPITAL"</b></p> <p>2,601 students in face-to-face classes (before the lockdown), 162 in online courses</p>

	<p><b>15,147</b> <b>CHILDREN AND TEENAGERS PARTICIPATING IN THE PLAYROOM'S ACTIVITIES</b></p>
	<p><b>1,000</b> <b>VOLUNTEERS AT THE HOSPITAL</b></p> <ul style="list-style-type: none"> <li>• 36,000 hours of presence at the Hospital premises</li> <li>• 50 credited parents' and volunteer associations</li> </ul>



# PROFESSIONALS



**3,576**

**EMPLOYEES, COLLABORATORS  
AND RESEARCH FELLOWS**

72% of whom are women (61% of the managers)



**28,115**

**HOURS OF TRAINING**

- **6,332** participants (employees, collaborators and external staff)
- **34%** of the training hours are dedicated to the COVID-19 emergency

# INITIATIVES OF SOLIDARITY

**12**

**INTERNATIONAL COOPERATION PROJECTS**

Remote training and advice in **15** different paediatric specialties. **1** dedicated e-learning platform



**112**

**HUMANITARIAN  
PATIENTS  
ADMITTED  
TO THE HOSPITAL**

- Free healthcare for **2.3 million** euros thanks to Fondazione Bambino Gesù Onlus
- Humanitarian patients coming from **42** countries

**51**

**AFRICA**

**17**

**ASIA**

**21**

**EUROPE**

**23**

**AMERICA**





Bambino Gesù  
OSPEDALE PEDIATRICO